

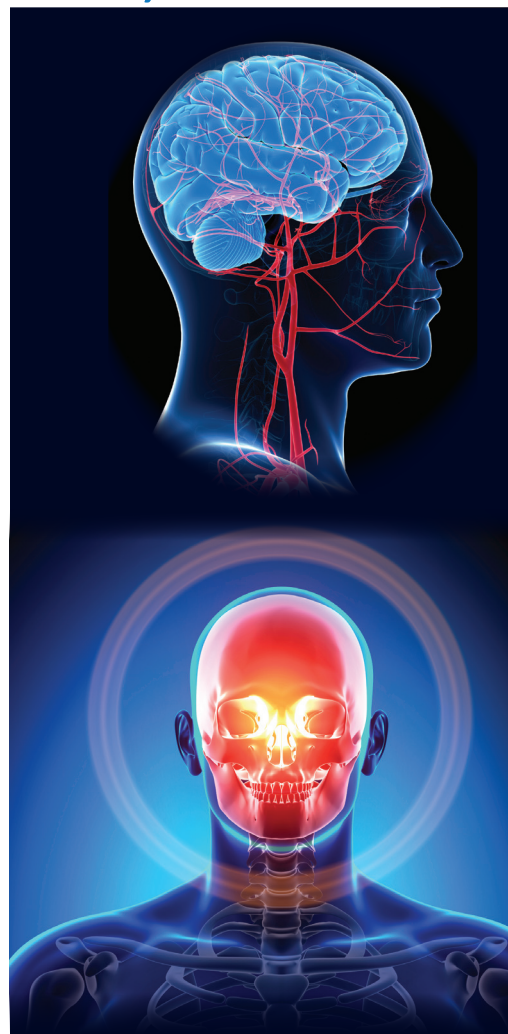
## MAGNETIC RESONANCE IMAGING (MRI)

### Exam Reference / Protocol Guidelines

For additional information on MRI and other radiologic exams,  
please consult the American College of Radiology's  
ACR Appropriateness Criteria® document found at [www.ACR.org](http://www.ACR.org).

#### AREA OF INTEREST

#### HEAD, NECK & CHEST



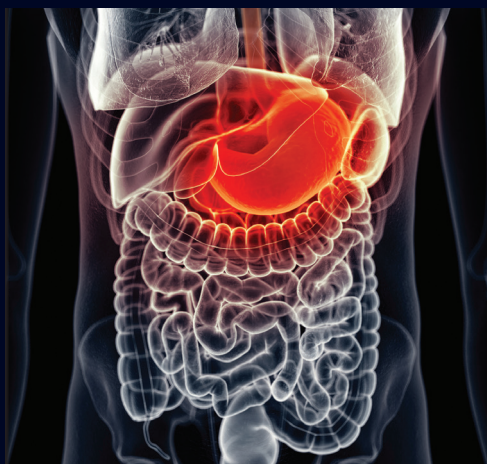
BODY PART EXAM	REASON FOR EXAM	IV CONTRAST	PROCEDURES TO PRE-CERT	CODES
BRAIN	Neoplasm/Mets or infection, MS, cranial neuropathy (Bell's, trigeminal neuralgia, acoustic neuroma), focal neurological deficit, headaches (new onset in cancer patient, arteritis, positional), new onset seizures, ataxia, pituitary abnormalities	YES	MRI Brain with and without	<b>70553</b>
	Stroke, TIA, migraines and typical headaches, dementia, concussion/TBI, memory loss	NO	MRI Brain without	<b>70551</b>
MRA HEAD (Please note: <b>MRA Head</b> and <b>MRV Head</b> cannot be performed on the same day)	Evaluate for aneurysm or intracranial stenotic disease, vertebrobasilar insufficiency, carotid or vertebral dissection, pulsatile tinnitus, first degree relative with aneurysm	NO	MRA Head without	<b>70544</b>
	Known AVM	YES	MRA Head with and without	<b>70546</b>
MRV HEAD	Concern for dural sinus thrombosis, dural sinus stenosis	NO	MRA Head without	<b>70544</b>
TMJ	Pain, clicking ( <i>check insurance, a limited number of plans provide coverage</i> )	NO	MRI TMJ without	<b>70336</b>
SOFT TISSUE NECK/FACE	Head and neck cancer, palpable lumps, adenopathy, infection	YES	MRI Soft Tissue Neck with and without	<b>70543</b>
MRA NECK	Carotid stenosis, vertebrobasilar insufficiency, dissection, vasculitis, FMD	YES	MRA Neck with and without	<b>70549</b>
CHEST	Mass, neoplasm, pectoralis tear	NO	MRI Chest without	<b>71550</b>
	Cardiac mass, mediastinal mass, chest wall mass	YES	MRI Chest with and without	<b>71552</b>
	Aortic dissection, Aortic aneurysm	NO	MRA Chest	<b>71555</b>

## MAGNETIC RESONANCE IMAGING (MRI)

### Exam Reference / Protocol Guidelines

For additional information on MRI and other radiologic exams,  
please consult the American College of Radiology's  
ACR Appropriateness Criteria® document found at [www.ACR.org](http://www.ACR.org).

#### AREA OF INTEREST ABDOMEN & PELVIS




AREA OF INTEREST	BODY PART EXAM	REASON FOR EXAM	IV CONTRAST	PROCEDURES TO PRE-CERT	CODES
ABDOMEN & PELVIS	LIVER	Hemangioma, cirrhosis, hepatitis, increased LFTs, hepatoma, cholangiocarcinoma, metastasis	YES	MRI Abdomen with and without	<b>74183</b>
	MRCP	Biliary obstruction, jaundice	NO	MRI Abdomen without	<b>74183</b>
	ADRENAL GLANDS	Hypertension, pheochromocytoma, mass, lesion	YES	MRI Abdomen with and without	<b>74183</b>
	KIDNEY	Mass, lesion, metastasis	YES	MRI Abdomen with and without	<b>74183</b>
	PANCREAS	Pancreatitis, mass, lesion	YES	MRI Abdomen with and without	<b>74183</b>
	MRA	Renal artery stenosis, hypertension, mesenteric artery stenosis, ischemic bowel	YES	MRA Abdomen with AND/OR without	<b>74185</b>
	ENTEROGRAPHY	Crohn's disease, small bowel tumor	YES (plus oral)	MRI Abdomen with and without MRI Pelvis with and without	<b>74183</b> <b>72197</b>
	PELVIS (GENERAL)	Proximal hamstring tear, sports hernia, fracture	NO	MRI Pelvis without	<b>72195</b>
		Bony pelvis for lesion, mass, infection, metastasis, bladder tumor, rectal cancer	YES	MRI Pelvis with and without	<b>72197</b>
	MALE PELVIS	Prostate cancer staging or localization (3T recommended)	YES	MRI Pelvis with and without	<b>72197</b>
	FEMALE PELVIS	Uterine fibroid, adenomyosis, urethral diverticulum, bicornate uterus, ovarian mass, endometriosis, metastasis	YES	MRI Pelvis with and without	<b>72197</b>
		Uterine fibroid embolization	YES	MRI Pelvis with and without MRA Pelvis with	<b>72197</b> <b>72198</b>

## MAGNETIC RESONANCE IMAGING (MRI)

### Exam Reference / Protocol Guidelines

For additional information on MRI and other radiologic exams,  
please consult the American College of Radiology's  
ACR Appropriateness Criteria® document found at [www.ACR.org](http://www.ACR.org).

#### AREA OF INTEREST MUSCULOSKELETAL

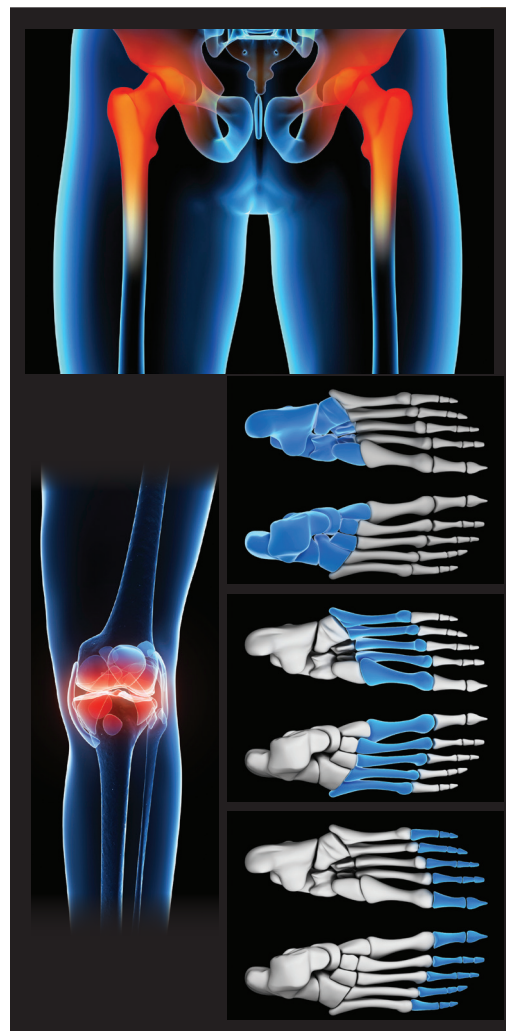
AREA OF INTEREST MUSCULOSKELETAL	BODY PART EXAM	REASON FOR EXAM	IV CONTRAST	PROCEDURES TO PRE-CERT	CODES
	UPPER EXTREMITIES (NO JOINT) Humerus, forearm (radius/ulna), hand	Fracture or stress fracture	NO	MRI upper extremity without	<b>73218</b>
		Mass, lesion, metastasis, infection	YES	MRI upper extremity with and without	<b>73220</b>
	UPPER EXTREMITY JOINTS				
	SHOULDER	Labral tear, Bankart lesion, SLAP tear, history of instability/dislocation, post-op rotator cuff repair	Arthrogram	MRI joint with IR joint arthrogram	<b>73222</b>
		Rotator cuff tear, biceps tendon tear, fracture, avascular necrosis, muscle tear	NO	MRI upper extremity joint without	<b>73221</b>
	ELBOW	Ulnar collateral ligament tear	Arthrogram	MRI joint with IR joint arthrogram	<b>73222</b>
		Biceps tendon tear, osteochondritis dissecans	NO	MRI elbow without	<b>73221</b>
		Tennis elbow, lateral epicondylitis, common extensor tendon, ERCB tear	Consider IV contrast	MRI elbow with and without	<b>73223</b>
	WRIST	Triangular fibrocartilage tear, scapholunate ligament tear	Consider Arthrogram	MRI joint with IR joint arthrogram	<b>73222</b>
		Occult fracture, tendon tear	NO	MRI upper extremity joint without	<b>73221</b>
		Osteomyelitis, septic arthritis, tumor, mass, metastasis, cellulitis, infection	YES	MRI upper extremity joint with and without	<b>73223</b>
	FINGERS	Tendon tear, fracture, muscle tear, Stener lesion, collateral ligament tear	NO	MRI upper extremity joint without	<b>73221</b>
		Osteomyelitis, septic arthritis, tumor, mass, cellulitis, infection	YES	MRI upper extremity joint with and without	<b>73223</b>

## MAGNETIC RESONANCE IMAGING (MRI)

### Exam Reference / Protocol Guidelines

For additional information on MRI and other radiologic exams,  
please consult the American College of Radiology's  
ACR Appropriateness Criteria® document found at [www.ACR.org](http://www.ACR.org).

#### AREA OF INTEREST MUSCULOSKELETAL

AREA OF INTEREST MUSCULOSKELETAL	BODY PART EXAM	REASON FOR EXAM	IV CONTRAST	PROCEDURES TO PRE-CERT	CODES
	LOWER EXTREMITIES: Femur, Tibia/Fibula (see FOOT below)	Fracture, stress fracture, shin splints	NO	MRI lower extremity without	<b>73718</b>
		Mass, lesion, metastasis, osteomyelitis	YES	MRI lower extremity with and without	<b>73720</b>
	LOWER EXTREMITY JOINTS				
	HIP (Please note: Bilateral hips = 73721 x 2)	Fracture, stress fracture, avascular necrosis	NO	MRI lower extremity without	<b>73721</b>
		Labral tear, femoroacetabular impingement	Arthrogram	MRI lower extremity with	<b>73722</b>
	KNEE	Meniscus tear, ACL tear, MCL tear, osteochondritis	NO	MRI lower extremity without	<b>73721</b>
		Post-op partial meniscectomy, ACL reconstruction	Arthrogram	MRI lower extremity with	<b>73722</b>
	ANKLE/HINDFOOT: Exam protocols are area- specific and cannot be com- bined with other areas in the same appointment.	Achilles, posterior tibial tendon, peroneus brevis/longus, fracture, stress fracture, plantar fasciitis, tarsal tunnel	NO	MRI Ankle/Hindfoot without	<b>73721</b>
			Consider IV contrast	MRI Ankle/Hindfoot with and without	<b>73721</b>
	MIDFOOT: Exam protocols are area- specific and cannot be com- bined with other areas in the same appointment.	Fracture, stress fracture, Lisfranc injury	NO	MRI Midfoot without	<b>73718</b>
	FOREFOOT: Exam protocols are area- specific and cannot be com- bined with other areas in the same appointment.	Morton's neuroma, mass, lesion, osteomyelitis, tendonopathy, plantar plate	YES	MRI Forefoot with and without	<b>73720</b>



## MAGNETIC RESONANCE IMAGING (MRI)

### Exam Reference / Protocol Guidelines

For additional information on MRI and other radiologic exams,  
please consult the American College of Radiology's  
ACR Appropriateness Criteria® document found at [www.ACR.org](http://www.ACR.org).

#### AREA OF INTEREST

#### SPINE



#### BODY PART EXAM

#### REASON FOR EXAM

#### IV CONTRAST

#### PROCEDURES TO PRE-CERT

#### CODES

CERVICAL  
SPINE

Neck pain, radiculopathy, trauma

NO

MRI Cervical Spine  
without

**72141**

Prior surgery, concern for neoplasm  
or infection, myelopathy, MS, syrinx

YES

MRI Cervical Spine  
with and without

**72156**

THORACIC  
SPINE

Thoracic back pain, radiculopathy,  
trauma

NO

MRI Thoracic Spine  
without

**72146**

Prior surgery, concern for neoplasm  
or infection, myelopathy, MS, syrinx

YES

MRI Thoracic Spine  
with and without

**72157**

LUMBAR  
SPINE

Low back pain, radiculopathy,  
trauma, spondylolisthesis

NO

MRI Lumbar Spine  
without

**72148**

Prior surgery, concern for neoplasm  
or infection

YES

MRI Lumbar Spine  
with and without

**72158**

SACRUM

Pain, trauma, insufficiency fractures

NO

MRI Pelvis without

**72195**

Concern for neoplasm or infection

YES

MRI Pelvis with and  
without

**72197**



AdRad.com 203.337.XRAY (9729)

## MAGNETIC RESONANCE IMAGING (MRI) Exam Reference / Protocol Guidelines

For additional information on MRI and other radiologic exams,  
please consult the American College of Radiology's  
ACR Appropriateness Criteria® document found at [www.ACR.org](http://www.ACR.org).

### MRI SAFETY

Magnetic Resonance Imaging (MRI) uses a magnetic field, combined with radio waves to create very detailed images of the body's organs, tissues, and internal structures. MRI exams do not use ionizing radiation or cause pain. The magnetic fields do not produce any known tissue damage or side effects. Most implants placed in the body during surgery or other procedures are safe for MRI. However, to ensure patient safety, **ALL** implants must be checked prior to the MRI exam. Certain implants may cause distortion of images if they are located near the area being scanned. It is also important that we are informed of any other foreign objects in the body, or any injuries to the body involving metal.

To make our MRI exams as safe as possible for our patients, we require the following patient information:

- The patient's age, weight, and current medications
- Patient's medical history: Renal failure, diabetes, high blood pressure?
- History of recent surgery, or surgery on the area to be scanned
- Is there any possibility the patient could be pregnant?
- The date and reason for any previous MRI exams
- Has the patient ever had any type of cancer?
- Description and model numbers of any implanted devices
- Does the patient have a chest port?

### CONTRAST

Generally speaking, contrast dye is recommended whenever there is the possibility of a tumor or infection in any body part. Certain MRI exams require the injection of contrast dye, called gadolinium, into a vein to help clarify images and provide for improved interpretation. Although gadolinium does not contain iodine, recent findings have shown that gadolinium-based contrast agents increase the risk of nephrogenic systemic fibrosis (NSF) in patients renal insufficiency. Therefore, we have adjusted our screening guidelines to ensure the highest safety standards for patients.

### ADVANCED RADIOLOGY MRI WEIGHT LIMITS

Fairfield: 440 lbs. (550 lbs. for certain exams)

Orange: 440 lbs. (550 lbs. for certain exams)

Stamford: 440 lbs. (550 lbs. for certain exams)

Stratford: 350 lbs.

Shelton: 350 lbs.

Trumbull: 440 lbs. (550 lbs. for certain exams)

### CLAUSTROPHOBIA

Our technologists are specifically trained to assist those patient who may suffer from clautrophobia. Most claustrophobic patients have successful exams. Some patients may require a mild oral sedative prescribed by their doctor.